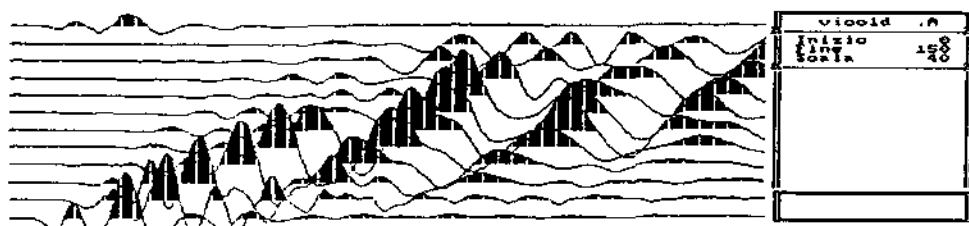
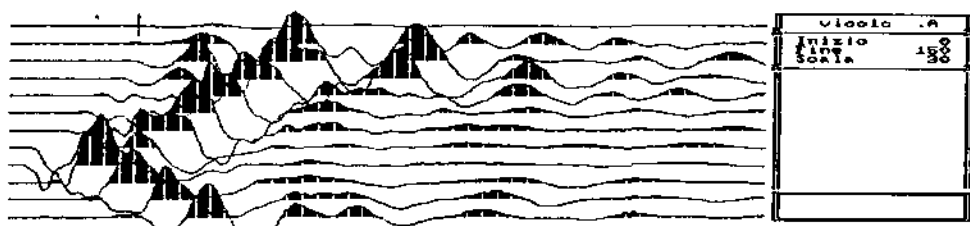
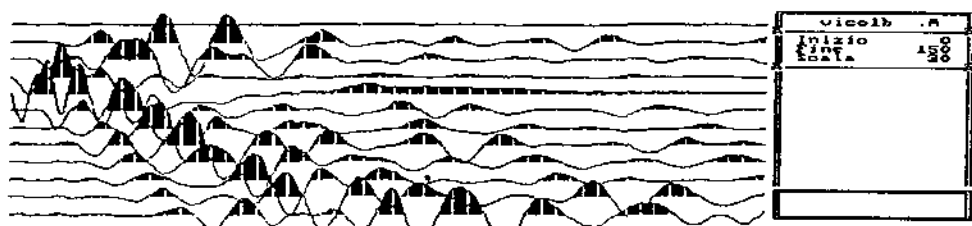
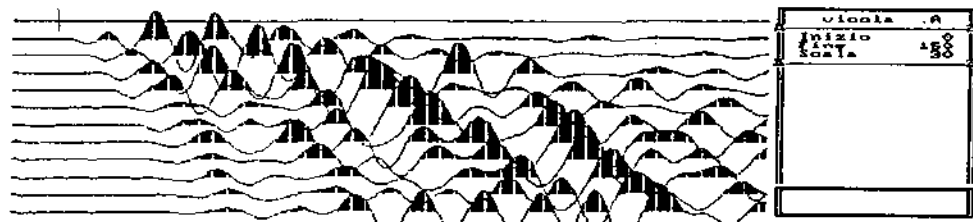
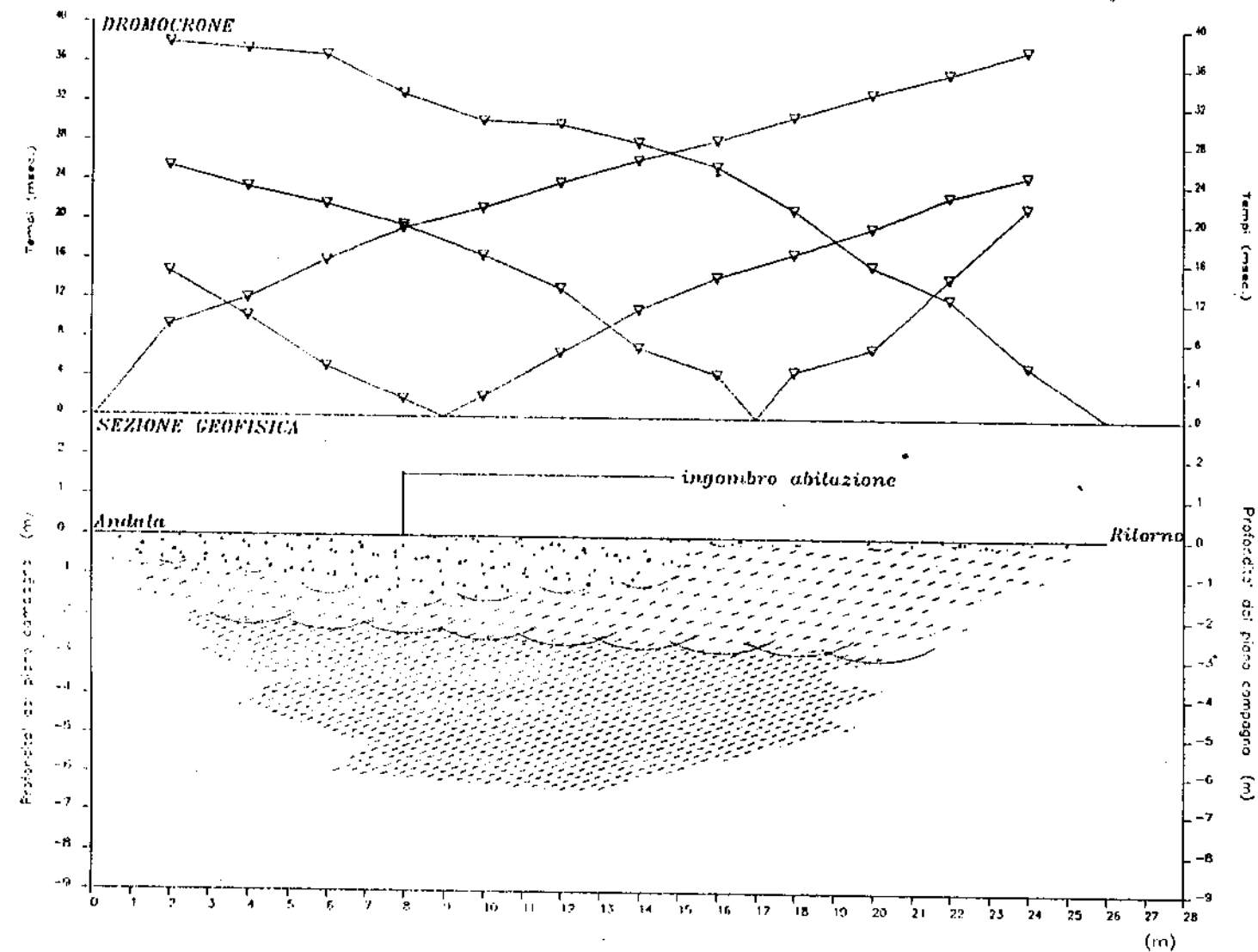


sismogrammi





LEGENDA

- Tempi dei primi arrivi ai geofoni
- Profilo topografico
- Distanza dalla superficie topografica del limite di strato all'involuppo degli archi
- riporti e coperture elastico/detritiche
 $V_p=250-330$ m/sec
- terreni elastici ben addensati ed alterati decompressi del bedrock
 $V_p=380-470$ m/sec
- terreni lapidei molto fratturati / tenaci
 $V_p=970-1100$ m/sec

PROSPEZIONE SISMICA

base vico_b - m 26

loc. Capilano
comune di Vicopisano PI